

The **Securamesh 1000** fence system provides a medium level of security to your property. This mesh is aesthetically pleasing to the eye with high through-visibility, helping it blend into its surrounding. **Securamesh** is a welded mesh panel with horizontal triangular folds that help to form a strong, rigid fence line, particularly suitable for use as a general purpose boundary fence.



## Posts, Clamp Bars & Fixings

The 'post & clip system' is designed with flexibility & modularity in mind. This means the same posts and panels can be used for fencing ends & steps, helping the fence line follow the contours of the ground. Corner posts can be used for both internal and external fence cornering.

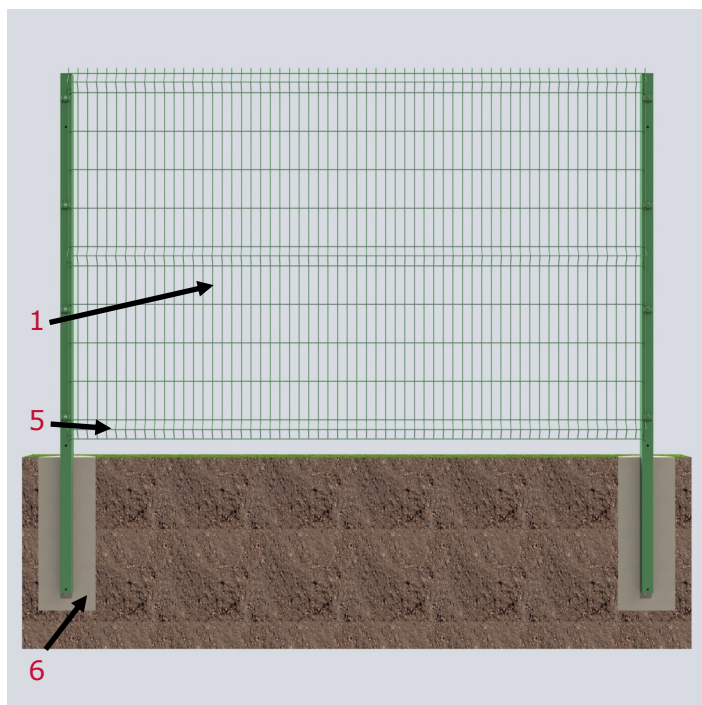
The system is easy to install with either bolt-down or dig-in configurations. With the vandal resistant security fixings this 'post and clip system' provides a reasonable level of security to any boundary.

## Finish

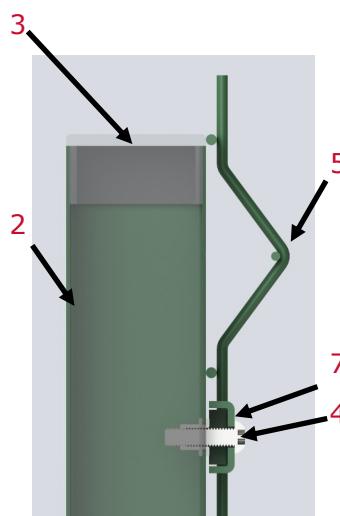
Panels and posts are submitted to number of precoat processes and are galvanised with the option to be powder coated in a variety of colours. All fixings are fully galvanised, or made from stainless steel.



## Typical Construction for Securamesh 1000

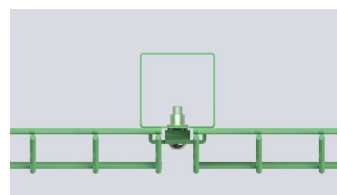


## Side Elevation

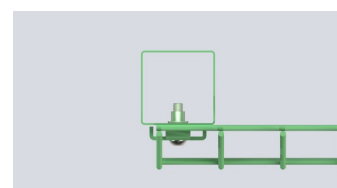


## Post Configurations

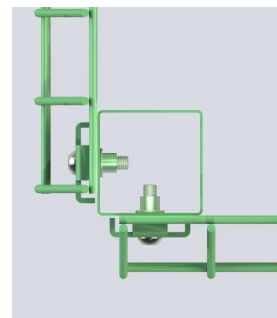
### Intermediate Post



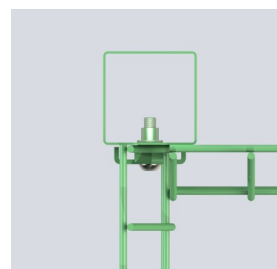
### End Post



### External Corner Post

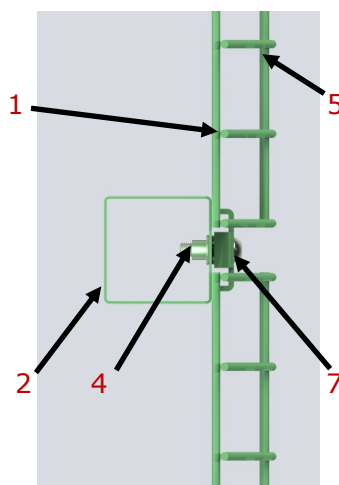


### Internal Corner Post



## Construction Key Table

- 1 Mesh Panel - mesh size 200mm x 55mm, 5mm wire
- 2 Post sizes varies with height (see table)
- 3 plastic cap—60mm x 60mm
- 4 M8 x 30mm stainless steel pin hex dome head security screw
- 5 Triangular fold—2, 3, 4 or 5 per panel (depending on height)
- 6 Concrete foundation
- 7 Durable metal clip



nominal fence height (m)	panel size height x width (m)	weight per panel (kg)	No. "V" bars per panel	overall length of post (mm)	weight of post (kg)	post size (mm)	No. of clips on post	ends/ inters	corners	top of post to first fixing (mm)	fence weight (kg/m)
0.7	630 x 3000	6.7	2	1000	2.67	60 x 60	2	1	2	125	3.09
0.9	830 x 3000	8.9	2	1200	3.2	60 x 60	3	1	2	125	3.99
1.0(1.1)	1030 x 3000	11	2	1400	3.74	60 x 60	3	1	2	125	4.86
1.2(1.3)	1230 x 3000	13.1	2	1700	4.54	60 x 60	3	1	2	125	5.82
1.5(1.6)	1530 x 3000	16.3	3	2000	5.34	60 x 60	4	1	2	125	7.14
1.8	1730 x 3000	18.5	3	2300	6.14	60 x 60	4	1	2	125	8.13
2	1930 x 3000	20.6	3	2600	6.94	60 x 60	4	1	2	125	9.09
2.4	2330 x 3000	24.9	3	3150	8.41	60 x 60	5	1	2	125	10.99
3.0(3.1)	3030 x 2445	26.4	4	3900	19.1	80 x 80	6	1	2	122	18.61